



# Cartridge Filters

## Sediment Filters

### String Wound



All Polypropylene, 10" & 20" long Double Open End, nominal filters for normal dirt load and temperature. Individually shrink wrapped. Fits standard 10" filter housing. Available in various micron ratings.



Polypropylene, 10" & 20" large diameter (4.5") filters for higher flow and normal temperature. Individually shrink wrapped. Double Open End, fits "big blue" type filter housings

### Melt Blown (Spun)



Polypropylene, 10" & 20", Double Open End, nominal filtration for normal dirt load and temperature. Individually shrink wrapped. Fits standard 10" filter housing. Available in various micron ratings.



**DGD5005\*\*:** Dual Graded Density 50 to 5 micron filtration Polypropylene, 10" & 20", 4 1/4" dia, Double Open End, for sediment filtration at normal temperature. Individually shrink wrapped. Fits "Big Blue" housings

### Pleated



Polypropylene, 10" /20" long, 4 1/4" dia, Double Open End, for sediment filtration at normal temperature. Individually shrink wrapped. Different micron ratings.



Reusable Polyester, 10"/20" Double Open End, nominal filtration for sediment filtration. Shrink wrapped. Temp range : 40-125F (4.4 - 51.6 degree Centigrade)

## Carbon Filters



**CERAMIKX\*:** 0.2micron nominal filter, >99.95% reduction of cryptosporidium & giardia, chlorine, taste & odor reduction



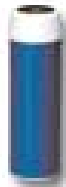
**CBR2-10\*\*:** Powder Activated Carbon for Lead Reduction through 2000 gallons. Reduction of VOCs, 0.5 micron filtration for reduction of cryptosporidium & giardia cysts. .Highly effective chlorine reduction through 3000 gallons.



**C1\*\*:** Carbon-Impregnated Cellulose, Economical, dual-purpose filter.



**CBC-10\*\*:** 0.5 micron nominal reduction of Cryptosporidium & Giardia & certain organic chemicals (VOCs). Effective through 20,000 gallons. Excellent drinking water or polishing filter. NSF listed components. 10"long, 2.5" dia, Double Open End. Temp range 40 - 180 F (4.4 to 82.2 C)



**GAC10\*\*:** Granular Activated Carbon Cartridge, 10" & 20" long for chlorine, taste & odor reduction.



**KX CTO2\*:** 5 micron nominal filter, chlorine, taste & odor reduction, performance tested and verified by independent lab.

\* - Product of KX Industries, USA  
\*\* - Product of Plymouth Products, US Filter



## Filter Housings



10" Clear Filter Housing with Pressure Relief Valve. 1/4" inlet/outlet connections



10" Polypropylene Filter Housing with Pressure Relief Valve 1/4" or 3/4" inlet/outlet connections



10" "Big Blue" style Polypropylene Filter Housing with Pressure Relief Valve & 1" inlet/outlet connections



20" Polypropylene Filter Housing with Pressure Relief Valve & 3/4" inlet/outlet connections



20" "Big Blue" Style Polypropylene Filter Housing with Pressure Relief Valve & 1" or 1.5" inlet/outlet connections

### Filter Housings Specifications

Housing Model	MOC	Cartridge		Inlet/Outlet Available	PRV	Look
		Length	Dia			
N-FH-10C	Styrene Acrylonitrile	10"	2.5"	3/4" & 1/4"	Yes	Clear
N-FH-10	Polypropylene	10"	2.5"	3/4" & 1/4"	Yes	Opaque
N-FHBB-10	Polypropylene	10"	4.5"	1"	Yes	Opaque
N-FH-20	Polypropylene	20"	2.5"	3/4"	Yes	Opaque
N-FHBB-20	Polypropylene	20"	4.5"	1"	Yes	Opaque

Distributed By:



### Neotec Water Treatment

36 Industrial Parkway South,  
Aurora, Ontario L4G 3W2,  
**CANADA**

Toll Free 1-888-779-2837  
www.NeotecWater.com  
info@NeotecWater.com



Made in Canada